

REC TWINPEAK 2S 72 SERIES

PREMIUM SOLAR PANELS WITH SUPERIOR PERFORMANCE

REC TwinPeak 2S 72 Series solar panels feature an innovative design with high efficiency and an industry-leading lightweight, yet robust construction, enabling customers to get the most out of the installation area.

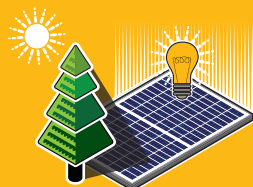
Combined with the product quality and reliability of a strong and established European brand, REC TwinPeak 2S 72 panels are ideal for commercial rooftops worldwide.



**NOW
WITH NEW
WARRANTY!**



**REDUCES BALANCE OF
SYSTEM COSTS**



**IMPROVED PERFORMANCE
IN SHADED CONDITIONS**

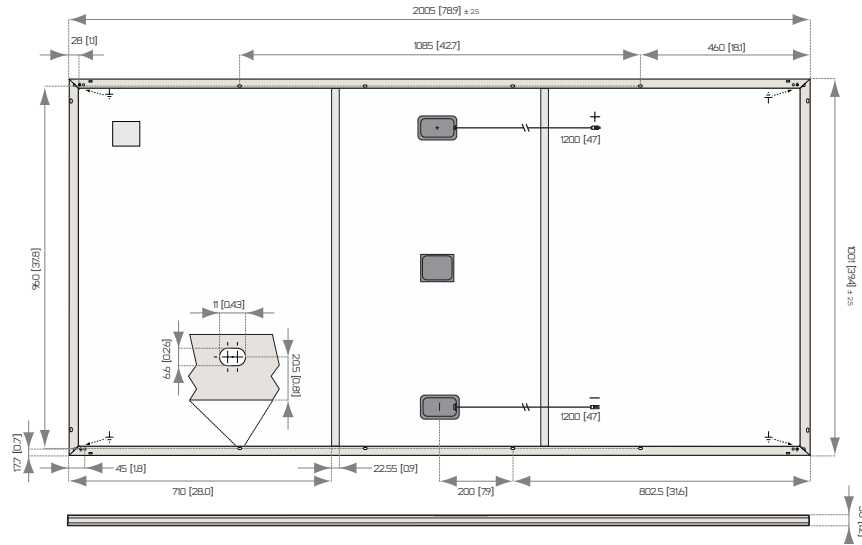


**INDUSTRY-LEADING LIGHTWEIGHT
72-CELL PANEL**



**100%
PID FREE**

REC TWINPEAK 25 72 SERIES



All measurements in mm [in]

| ELECTRICAL DATA @ STC | Product Code*: RECxxxTP25 72 | | | | | |
|---------------------------------------|------------------------------|-------|-------|-------|-------|-------|
| Nominal Power - P_{MPP} (Wp) | 330 | 335 | 340 | 345 | 350 | 355 |
| Watt Class Sorting - (W) | -0/+5 | -0/+5 | -0/+5 | -0/+5 | -0/+5 | -0/+5 |
| Nominal Power Voltage - V_{MPP} (V) | 38.1 | 38.3 | 38.5 | 38.7 | 38.9 | 39.1 |
| Nominal Power Current - I_{MPP} (A) | 8.67 | 8.75 | 8.84 | 8.92 | 9.00 | 9.09 |
| Open Circuit Voltage - V_{OC} (V) | 46.0 | 46.2 | 46.3 | 46.5 | 46.7 | 46.8 |
| Short Circuit Current - I_{SC} (A) | 9.44 | 9.52 | 9.58 | 9.64 | 9.72 | 9.78 |
| Panel Efficiency (%) | 16.5 | 16.7 | 16.9 | 17.2 | 17.4 | 17.7 |

Values at standard test conditions STC (airmass AM 1.5, irradiance 1000 W/m², cell temperature 77°F (25°C)).
At low irradiance of 200 W/m² (AM 1.5 and cell temperature 77°F (25°C)) at least 95% of the STC module efficiency will be achieved.
*xxx indicates the nominal power class (P_{MPP}) at STC, and can be followed by the suffix XV for modules with a 1500 V maximum system rating.

| ELECTRICAL DATA @ NOCT | Product Code*: RECxxxTP25 72 | | | | | |
|---------------------------------------|------------------------------|------|------|------|------|------|
| Nominal Power - P_{MPP} (Wp) | 244 | 252 | 257 | 260 | 264 | 268 |
| Nominal Power Voltage - V_{MPP} (V) | 34.9 | 35.5 | 35.7 | 35.8 | 36.0 | 36.2 |
| Nominal Power Current - I_{MPP} (A) | 6.99 | 7.10 | 7.19 | 7.25 | 7.32 | 7.39 |
| Open Circuit Voltage - V_{OC} (V) | 42.3 | 42.8 | 42.9 | 43.1 | 43.2 | 43.3 |
| Short Circuit Current - I_{SC} (A) | 7.44 | 7.74 | 7.79 | 7.84 | 7.90 | 7.95 |

Nominal cell operating temperature NOCT (800 W/m², AM 1.5, windspeed 1 m/s, ambient temperature 68°F (20°C)).
*xxx indicates the nominal power class (P_{MPP}) at STC, and can be followed by the suffix XV for modules with a 1500 V maximum system rating.

CERTIFICATION



UL 1703, Fire classification: Type 1 (1500 V XV); Type 2 (1000 V);
IEC 61215, IEC 61730, IEC 62804 (PID), IEC 62716 (Ammonia),
IEC 61701 (Salt Mist level 6), ISO 11925-2 (Class E)
ISO 9001: 2015, ISO 14001: 2004, OHSAS 18001: 2007

WARRANTY

20 year product warranty
25 year linear power output warranty
Max. performance degradation of 0.5% p.a. from 97.5% in year 1
See warranty conditions for further details.

17.7% EFFICIENCY

20 YEAR PRODUCT WARRANTY

25 YEAR LINEAR POWER OUTPUT WARRANTY

TEMPERATURE RATINGS

| | |
|---|---------------|
| Nominal Operating Cell Temperature (NOCT) | 44.6°C (±2°C) |
| Temperature Coefficient of P_{MPP} | -0.36 %/°C |
| Temperature Coefficient of V_{OC} | -0.30 %/°C |
| Temperature Coefficient of I_{SC} | 0.066 %/°C |

GENERAL DATA

| | |
|---------------|--|
| Cell type: | 6 strings of 24 REC half-cut mc-Si PERC |
| Glass: | 3.2 mm (0.13") solar glass with anti-reflection surface treatment |
| Back Sheet: | Highly resistant polyester |
| Frame: | Anodized aluminum (silver) |
| Support bars: | Anodized aluminum |
| Junction Box: | IP67 rated with 3 bypass diodes 4 mm ² (12 AWG) PV wire, 1.2 m + 1.2 m (47" + 47") |
| Connectors: | Tonglin TL-Cable01S-F (4 mm ²) |
| Origin: | Made in Singapore |

MAXIMUM RATINGS

| | |
|--------------------------|----------------------------------|
| Operational temperature: | -40 ... +85°C (-40 ... +185°F) |
| Maximum System Voltage: | 1000 V / 1500 V |
| Design load (+): snow | 367 kg/m ² (3600 Pa)* |
| Maximum test load (+): | 550 kg/m ² (5400 Pa) |
| Design load (-): wind | 163 kg/m ² (1600 Pa)* |
| Maximum test load (-): | 244 kg/m ² (2400 Pa) |
| Max series fuse rating: | 25 A |
| Max reverse current: | 25 A |

* Safety factor 1.5

MECHANICAL DATA

| | |
|-------------|---|
| Dimensions: | 2005 x 1001 x 30 mm (78.9" x 39.4" x 1.2") |
| Area: | 2.01 m ² (21.6 ft ²) |
| Weight: | 22 kg (48.5 lbs) |

Note! Specifications subject to change without notice.

Founded in Norway in 1996, REC is a leading vertically integrated solar energy company. Through integrated manufacturing from silicon to wafers, cells, high-quality panels and extending to solar solutions, REC provides the world with a reliable source of clean energy. REC's renowned product quality is supported by the lowest warranty claims rate in the industry. REC is a Bluestar Elkem company with headquarters in Norway and operational headquarters in Singapore. REC employs more than 2,000 people worldwide, producing 1.5 GW of solar panels annually.



www.recgroup.com